



FIRST BAPTIST CHURCH TUPELO
Mission Journey Opportunities 2024

Table of Contents

Challenge	3
Mission Guidelines and Travel Information	4-5
• Mission Journey Guidelines	
• Passport	
• TSA Travel Information	
• License or Identification Card	
• Sentinel Training	
Local	6-7
• Broken Lives Ministry	
• English As a Second Language (ESL)	
• Literacy	
• Parkgate Clinic Tupelo	
• Support Ministry for Foster Care	
• Widow/Widower/Homebound Weekend of Ministry	
If You Cannot Travel	
• Other Mission Opportunities	
• Ways You Can Contribute through Offerings/Giving	
North American	8-10
• Eight Days of Hope	
• Hawaii	
• Maine	
• Canada	
International	10-16
• Cuba	
• Japan, Toyota City	
• Malawi	
• Philippines, Cagayan De Oro	
• Poland, Krakow	
• Uganda	

God is pursuing with omnipotent passion a worldwide purpose of gathering joyful worshipers for Himself from every tribe and tongue and people and nation. He has an inexhaustible enthusiasm for the supremacy of His name among the nations. Therefore, let us bring our affections into line with His, and for the sake of His name, let us renounce the quest for worldly comforts and join His global purpose."

~John Piper

"Go therefore and make disciples of all nations, baptizing them in the name of the Father and of the Son and of the Holy Spirit, teaching Them to observe all that I have commanded you. And behold, I am with you always, to the end of the age." Matthew 28:19-20 ESV

The Challenge

Will you accept the challenge to carry the gospel to the *uttermost* areas of the world?

Often when one thinks of the *uttermost*, far away places and long air travel are the first things that come to mind. However, the *uttermost* could be your neighbor or your neighborhood. For others, the *uttermost* could be across the world. God calls His people to be on mission wherever He places them day-by-day. As you pray through the opportunities, ask God to give you a heart for the nations. When you think of the nations, please do not think of lines drawn on a map by man; rather, think about people groups and every nation, tribe and tongue. God has called us with a mission to reach the peoples of the world. **The church does not have a mission; the mission has the church.**

This mission booklet is a resource to inform each member of the many missional opportunities available through First Baptist Church of Tupelo during the 2024 church year.



Prayerfully consider where the Lord will call you on mission during the coming year.
Mark your interest on the insert in the booklet or upcoming inserts in the Connect Guide.

"But you will receive power when the Holy Spirit comes upon you. And you will be my witnesses, telling people about me everywhere—in Jerusalem, throughout Judea, in Samaria, and to the ends of the earth." Acts 1:8

TSA Travel Information

TSA guidelines for travel can be found at <http://www.tsa.gov/traveler-information>.

REAL ID TSA REQUIREMENT

Do you have REAL ID? Beginning May 3, 2023, you will need a state-issued **REAL ID compliant license or identification card**, or another acceptable form of ID (such as a passport), to fly within the United States. This applies to all travelers 18 years of age and older.

REAL ID-compliant cards are marked with a star at the top of the card. If you're not sure, contact your state driver's license agency on how to obtain a REAL ID compliant card.

For more information, please visit the [TSA REAL ID website](#).

Passport

- Your Passport must be valid six months from the return date to the USA following travel.
- You can apply for a U.S. Passport in Tupelo at:
 - ⇒ Thomas Street Post Office (limited times of operation)
 - ⇒ Courthouse
 - ⇒ Print form online, complete

For additional information or to print a Form DS-11: Application for U.S. Passport, go to <http://travel.state.gov/content/passports/english/passports/new.html>.

1. The mission journey costs shown reflect a range of possible trip costs. Scholarship money from FBC Tupelo and other scholarship organizations like Mississippi Baptist Convention Board Mission Mobilization Department will be determined after all participants have enlisted. Participants will be advised of total out-of-pocket costs before any airline tickets are purchased or non-refundable deposit deadlines pass. Participants will have the option to opt out, prior to the posted deadline, if the cost proves to be prohibitive to the individual. **PARTICIPANTS SHOULD BE PREPARED TO PAY THE FULL COST OF THE TRIP.**
2. The printed cost does not include travel insurance for domestic journeys. The cost does include Gallagher insurance for all international journeys. The Gallagher insurance provides coverage for medical emergencies, evacuation, and lost luggage. Some coverage is also provided for a family member's travel in the event a parent or spouse should need to reach a sick family member on the mission field. This is not trip cancellation insurance. COVID related coverage is limited.
3. All mission journey participants must complete a Mission Journey Application for the journey you wish to participate in before your name will be added to the list.

All mission journey participants must pay the required deposit on trips requiring air travel. Once airline tickets are purchased, deposits are non-refundable, and participants will be responsible for the full price of the airfare. In the event a name change can be made on a ticket for a passenger unable to travel, the original deposit is refundable. If a ticket cannot be sold to another person wanting to travel, the original participant must pay the full price of the ticket. It is highly recommended that participants purchase trip cancellation insurance to cover emergency cancellation on airline tickets due to health or family matters.

5. All mission journey participants must sign a Mission Journey Covenant at the time of completing the Mission Journey Application. Forms are available in the office or from Lee Allred, Missions Pastor.
6. All mission journey participants must give testimony of a personal relationship with Jesus Christ and be willing to share of His work in their lives one on one.
7. Participants must be actively involved in the on-going ministry of the local church. College students must be actively involved in a campus ministry or church ministry.



Sentinel Training

Sentinel Training is required for all international mission journey participants receiving support from the Mississippi Baptist Convention and FBC Tupelo. If you are going on a 2024 international journey with FBC Tupelo, you will need to have Sentinel Training. Classes will be offered through FBC Tupelo and need to be renewed every two years.

8. Participants must make arrangements to secure all travel documents and the required vaccinations before the travel deadlines. Passports must be valid for at least six months after travel date. Check passport, drivers license or other government issued identification at least six weeks prior to travel date.
9. First Baptist Church of Tupelo cannot be responsible for participants obtaining a valid government-issued travel document or visa. Lost or stolen travel documents are not the responsibility of FBCT. Lost or late travel documents do not entitle the participant to a refund of payments made to First Baptist Church of Tupelo or travel agencies.
10. Participants agree to participate in all meetings and complete all assignments on time and prior to travel.
11. Participants should understand that mission journeys are extremely demanding and sometimes require a certain level of physical fitness or training prior to travel.
12. Participants must prepare spiritually and physically to meet the demand of each journey.
13. The Serving Ministry of First Baptist Church of Tupelo reserves the right to deny travel to any participant deemed unsuitable for travel due to spiritual or physical conditions, or health concerns that might hinder the overall performance of the team.
14. Mission journeys will be open to non-First Baptist Church of Tupelo members thirty days prior to the deposit deadline. Non-First Baptist Church of Tupelo members are not eligible to receive scholarship funds from First Baptist Church of Tupelo.
15. Non-First Baptist Church of Tupelo participants may apply for Mississippi Baptist Convention Board funds only if they are members of a Southern Baptist church in the state of Mississippi.
16. All trip participants agree not to divert tithe money from the regular church operating budget or from the "Mark of Faith Capital Campaign commitment to fund personal mission journeys.
17. Participants signing up after the deposit deadline will not be eligible for scholarship funding.
18. All participants must complete the Sentinel Security Training prior to receiving First Baptist Church of Tupelo or Mississippi Baptist Convention funds.
19. All participants must complete the background check requested by IMB and MBCB.

Local Missions

WIDOW/WIDOWER/HOMEBOUND WEEKEND OF MINISTRY

Participants: Family, Individuals, Small Groups

Join others in our church for a morning of ministry assisting our widow/widowers and homebound members doing maintenance and yard work around their homes.



PARKGATE PREGNANCY CLINIC

For more information contact Pastor Lee or Parkgate Representative, Carrie Haadsma at 662-841-1517.

Parkgate utilizes volunteers in two different ways: Office Volunteers and Client Advocates (counselors).

- **Office Volunteers** are the first face of Parkgate. They welcome clients who come into the office, get them started on a bit of paperwork, answer phones and make the often scared and vulnerable clients feel comfortable.
- **Client Advocates** are trained to educate clients, administer pregnancy tests, and counsel clients on their options.

These volunteers serve Monday-Thursday, 9:00 a.m.-4:00 p.m.

Other Ways to participate in the ministry

- Diaper/wipes drive
 - ◇ With small groups
 - ◇ Families reaching out in their neighborhood asking local residents to contribute diapers and wipes
 - ◇ Collecting small new baby items such as sleepers or clothes 0-12 months, bottles, pacifiers, etc.
 - ◇ Raising funds for car seats for parenting class. A new class is held every 3 months. Parkgate tries to provide the same standard baby car seat for each lady in the class.
- School Empower Program
 - ◇ Volunteers are trained to lead in education classes in local school districts
 - ◇ **Contact Pastor Lee for more information about the school empower program.**

LOCAL MISSION MINISTRIES

As announced.



SUPPORT MINISTRY FOR FOSTER CARE Families and Children



WE CAN MAKE A DIFFERENCE!

If you can read and write, why not reach out to adults and children alike who need a Christlike encourager and helper? Join FBC Tupelo as we partner with Mt. Sinai Church in ministering to individuals by assisting with their needs and teaching them the skills that will be beneficial for their future academically and spiritually!

For more information:
662-842-1327
frontdesk@fbctupelo.org



ENGLISH AS A SECOND LANGUAGE

Participants: Students (age 15 and above) and adults—a background check is required.

Serve Wednesday evenings or Thursday mornings through ministry to the children of our ESL parents. We depend on volunteers to help staff this mission ministry need. If you would be willing to serve once, twice, three or four times a month please sign up and get plugged into this great ministry. We have many moms that come to learn English but more importantly they are hearing the Gospel of Jesus.



BROKEN LIVES



Broken
things can become
blessed things
if you let God do the mending.



Women's Campus, Pontotoc, MS

FBCT Contact: Melody Darcy, 601-870-3356 (text)
or 1melliedarsey@gmail.com

Capacity: up to 30 ladies

2024 opportunities for ministry:

Weekly

Monday, 8:30-10:30

- Join team rotation for Bible study, prayer, snacks and crafts.
- Provide snacks or craft supplies for these sessions for 10-12 ladies.

Monthly

Third Monday Event, 6:00-8:00 p.m.

- Join team rotation for third Monday, 6:00-8:00 p.m. for Bible study, prayer, snacks, and crafts
- Help provide snacks or craft supplies for these evenings. (Approximately 30)

Throughout year

- Donate gently used or new items for shoe/clothes closet
- Cash donations
- Cleaning supplies
- Toiletries
- Craft projects
- Plastic dinnerware/flatware/paper products
- Hygiene products
- Items from Broken Lives grocery list.

Other current needs:

- Recovery Bibles
- Used Bibles of any translation
- Stainless silverware

Men's Campus, Nettleton MS

FBCT Contact: Tracie Lanphere, 662-678-6251

First Baptist Church, Tupelo has partnered with Broken Lives Men's Ministry in Nettleton, MS. The goal is to provide ministry opportunities for the First Baptist Family to invest in the lives of the men that find themselves walking through the doors of this six month, faith based rehabilitation program.

Several from First Baptist Church currently meet weekly with these men to teach and encourage them on their road to recovery.

2024 opportunities for ministry:

- Monthly Saturday Fellowship (ex. Movie Days, Ministry Fair, Fall Tailgate, homemade ice cream/game day). **Male (and some female) volunteers needed for monthly fellowships**
- Christmas Season Celebration Dinner (at FBCT)
- Worship nights

Ministry service opportunities

- Provide snacks (ex. brownies, cookies, chips, doughnuts, etc.) on Fridays throughout the year.
- Desserts and appetizers for Fall tailgate
- Christmas dinner desserts
- Popcorn machine operators for Movie days
- Homemade ice cream
- Hygiene starter kits prepared in the spring and fall.
- Toilet paper drive (twice/year)
- Book drive - Christian books

Important Note

Published costs are reflective of the total estimated costs of the trip. Participants should be prepared to cover the full cost of the trip. Potential support from the Church Mission Budget and the Mississippi Baptist Convention Board is contingent upon funds being available sixty days prior to travel.

For trips requiring the purchase of airline tickets, participants should plan to have paid the required deposits in full by the published deposit due dates. If an individual does not have adequate payments credited to his/her trip account at the time the airline tickets are purchased, FBC of Tupelo will not be responsible for purchasing an airline ticket for that participant.

Other Mission Opportunities

If you cannot travel, you have other opportunities to serve:

- Adopt a church planter's or pastor's family and provide quarterly needs. Gift cards for Target or Walmart, letters of encouragement and prayer, as well as traveling as the Lord enables you to make a visit. Visits are not required in order to participate in this ministry. This is great for a Grow Group class project or for individuals.
- Provide resources and support for the International Mission Board and Global Outreach missionaries from our church.
- Provide scholarship support for individuals desiring to serve on one of the journeys listed in this publication.
- Provide funding to help purchase supplies for a journey.

Ways You Can Contribute through Offerings/Giving

- Lottie Moon International Offering in December
- National Missions in April
- Baptist Children's Village in May
- State Missions in September
- Supporting a member of FBCT on mission
- Estate planning to fund missions and other ministries of FBCT for years to come.
- Fund FBCT Missionary Collegiate Scholarship
- Share the Light Fund

North American Missions

LEAVE A
Legacy
OF HOPE

Eight Days of Hope
Spring 2024

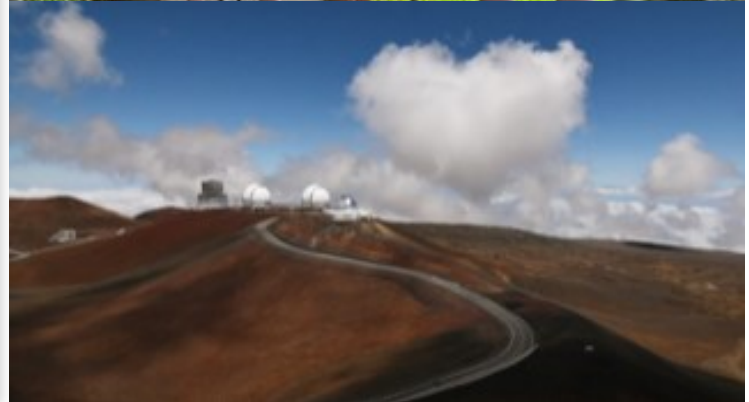
Rebuild Trip.

Date and location to be announced in early 2024.

Open to all ages.



Hawaii
Waikoloa Baptist Church Partnership
June 22-29, 2024
Open to families and singles
Team Size: 16 maximum (6 spaces remain open)
Cost: \$1200.00 per person
 Background check required.
Ministry Focus:
 Working with Waikoloa Baptist Church in community ministry and providing a VBS for the community





MAINE

April/May (final dates to be determined)

Participants: Men and Women

Cost: \$575 per person

Ministry Focus: Women will be providing a women's retreat and men will be doing work with churches in Maine.

September 2024

Participants: Men

Cost: \$480 per person

Ministry Focus: Men will serve in Maine when construction and building needs are determined.



WEST KELOWNA
July 13-20, 2024

A great opportunity for families to be on mission together.
Open to families, couples and individuals.

Team Size:
Cost: \$695 per person

Passport Required

Ministry Focus:
 Serving alongside Potter's House Community Church in West Kelowna Canada to provide a summer day camp experience while sharing the gospel with those in attendance.



Vision Journey to HAMILTON, ONTARIO
 Dates to be determined.

Open to all age 18 and older

Passport Required

Team Size:
Cost: \$750 per person

Ministry Focus:
 Meet Pastor Charlie Harris, a former pastor in Vicksburg, MS, and his wife Lesley. They moved to Hamilton in 2019 to plant a church in a city that is less than ten percent reached. The peoples of the world are coming to Hamilton. Projections indicate that Hamilton could increase in population by 350,000 people within the next five years. The opportunities for ministry are endless in this area of Canada.

CANADA

WEST KELOWNA comes to TUPELO
 February 16-20

Our partner church, Potter's House Community Church in West Kelowna is coming to serve alongside our church family Thursday February 16-Tuesday, February 20. They will be serving both inside our church family and within our community. You have opportunity to serve alongside them during this time.

Ways to Serve our Canada Team while they are in Tupelo.

- **Housing**
 Thursday Night-Tuesday Morning -10 Team Members will make up the team. We will need housing for 6 team members. If you are able to house a team member we would ask that you provide a breakfast meal.
- **Host the team in your home for meal**
 Perhaps you would like to host the team in your home on one of these nights for a meal. Certainly that would be a blessing.
 Thursday Night Meal
 Friday Night Meal
 Saturday Night Meal
 Sunday Night Meal
 Monday Night Meal
- **Shuttle drivers**
 To take the team to ministry points in our city during their stay in Tupelo.



International Missions



JAPAN

April/May 2024

Open to all who are 13 and older. Anyone under 16 must have a parent travel with them.

Cost: \$1,400.00 per person
Team Size Maximum: 10

Passport required

Ministry Focus:

- Serving local churches in the **TOYOTA CITY** area of Japan where many of the Japanese families who return to Japan from Tupelo are located.
- Pastor Charlie Seelen has made great connections in Japan with pastors and has a strategy to help lead in this partnership.





MALAWI

CMN
CHURCH MISSIONS NETWORK

September 4-14, 2024

**Open to all who are at least
16 years old.**

Team Size: 12

Cost: \$1,599 per person

Ministry Focus:

-Medical and Preaching Crusades-
Serving alongside Church Missions
Network to provide Evangelistic crusades
across Malawi as well as medical clinics in
the locations where crusades are held.
There will be opportunity to serve in
many different capacities.



UGANDA

September 18-28, 2024

Open to all who are 10th grade and older

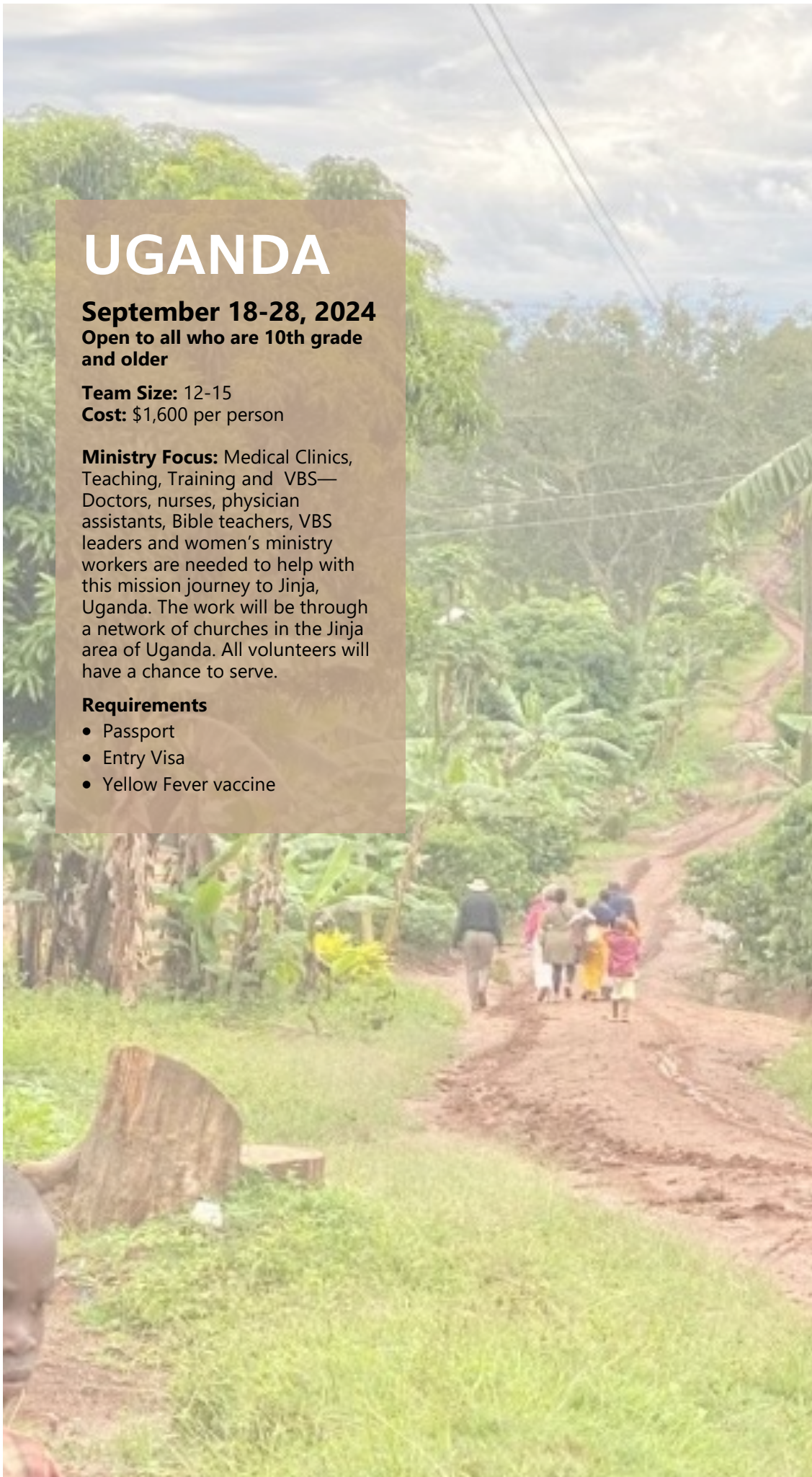
Team Size: 12-15

Cost: \$1,600 per person

Ministry Focus: Medical Clinics, Teaching, Training and VBS— Doctors, nurses, physician assistants, Bible teachers, VBS leaders and women’s ministry workers are needed to help with this mission journey to Jinja, Uganda. The work will be through a network of churches in the Jinja area of Uganda. All volunteers will have a chance to serve.

Requirements

- Passport
- Entry Visa
- Yellow Fever vaccine





CUBA

November 8-15, 2024

Adults, college age, young professionals, couples, singles, senior adults

Team Size: 6-8

Cost: \$850 per person

Deadline to sign up: March 1, 2024

Passport required.
Entry Visa Required.

Ministry Focus:

Serving the church network in the Western Baptist Convention of Cuba with pastor training, women's ministry, children's ministry, and community outreach. Lodging is at a hotel, a hostel or a local church. All expenses are covered in the trip costs except souvenirs and meals while traveling to and from Cuba.



PHILIPPINES

Spring

Families and individuals 16 years old and up.

Team Size: 6-8

Cost: \$1,650 per person

Ministry Focus:

Vacation Bible school for five churches.

Fall

Open to all who love to teach and disciple

Team Size: 6-8

Cost: \$1,650 per person

Ministry Focus:

- Serve alongside Pastor Matt in helping train pastors in basic Christian doctrine and simple systematic study of the Bible.
- Ladies traveling would disciple the pastor's wives and other ladies in leadership within the church.

Requirements for both trips

- Passport
- Negative COVID test currently required for nonvaccinated individuals. Test must be done within 24 hours of departure.





POLAND

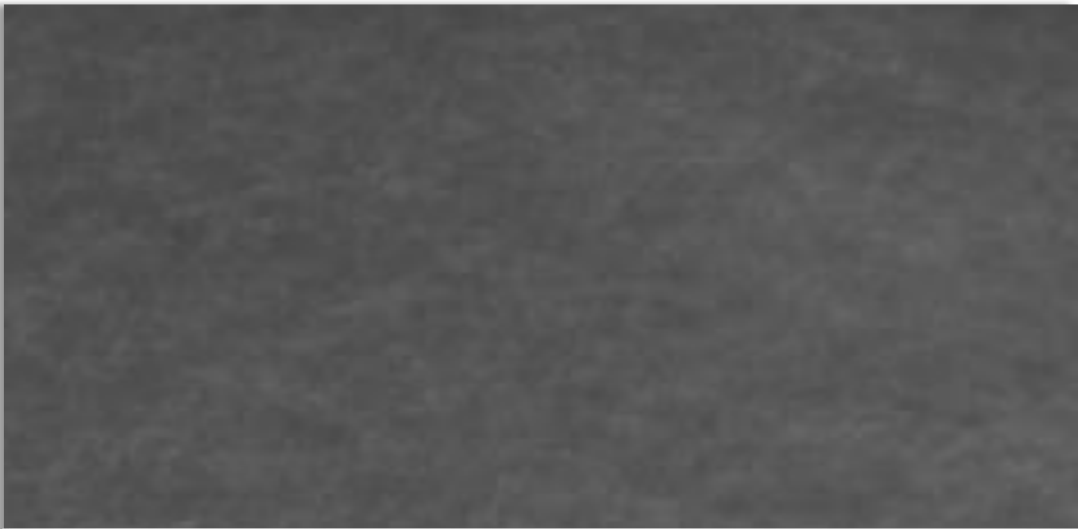
May 24-June 1, 2024

High school junior and senior students

Team Size: team is full
Cost: \$1,000 per person

Passport required.
Entry Visa Required.

Ministry Focus:
Serving alongside the Krakow ministry team to provide sports ministry in the local parks. Leading out in street evangelism as students share in five-minute English encounters.



Everyone deserves an invitation.



First Baptist Church
300 North Church Street, Tupelo, MS 38804

DEVELOPED BY
FIRST BAPTIST CHURCH TUPELO MISSIONS MINISTRY